

## For More Information:

As with all emergencies, Evergreen Fire Rescue will keep the public we serve informed through our twitter feeds, websites, and with the sheriff offices of Jefferson and Clear Creek County. These websites can provide additional useful information.

**Evergreen Fire Rescue**  
www.evergreenfirerescue.com  
http://twitter.com/efr\_co

**Jefferson County Sheriff**  
www.jeffcosheriff.com  
http://jeffcosheriff.blogspot.com  
http://twitter.com/jeffcolorado  
For access to Code Red Reverse 911 notification, visit  
www.jeffcosheriff.com

**Clear Creek Sheriff**  
www.clearcreeksheriff.us  
For access to Code Red Reverse 911 notification, visit  
www.clearcreeksheriff.us

**Ready, Set, Go! Personal Wildfire Action Plan**  
www.firesafetyeducators.org/lessonplans/  
ReadySetGoColorado.pdf

**Smart911**  
www.smart911.com

**www.firewise.org**

**U.S. Department of Homeland Security's Preparedness Website**  
www.ready.gov

**The Red Cross Disaster Family Plan**  
www.redcross.org/services/disaster/beprepared/  
familyplan.html

**Colorado Division of Emergency Management**  
www.dola.state.co.us/oem/oemindex.htm

**Colorado Water Conservation Board**  
www.cwcb.state.co.us/flood\_watch

**National Wildland/Urban Interface Fire Program**  
www.firewise.org

**U.S. Geological Survey**  
www.usgs.gov

**National Weather Service**  
www.nws.noaa.gov

**The Urban Drainage and Flood Control District**  
www.udfcd.org

## Mitigation Resources:

www.FederalGrants.com

www.fs.fed.us

www.state.co.us/gov\_dir/leg\_dir/olls/sl2008a/sl\_334.htm

www.kunc.org/post/tax-breaks-grant-money-available-colorado-wildfire-mitigation



For more information, please visit  
[www.evergreenfirerescue.com](http://www.evergreenfirerescue.com)  
Follow us on Twitter: @efr\_co

If it is an emergency, please dial 911

1802 Bergen Parkway  
Evergreen, CO 80439  
Phone: 303-674-3145 Fax: 303-674-8701

# What can you do to be prepared for evacuation?

Now is the time to take action.

Living in the mountains, and in wildfire areas, you should already be prepared to evacuate at a moment's notice.

Get an evacuation plan together and go over it with family and friends that you have close contact with.

## When You Must Evacuate:

If you are instructed to evacuate immediately, gather your household and go. When possible, take one car per household preferably a high clearance vehicle such as a SUV. This will keep you together and reduce traffic congestion and delay. In other cases, you may have time to follow these steps:

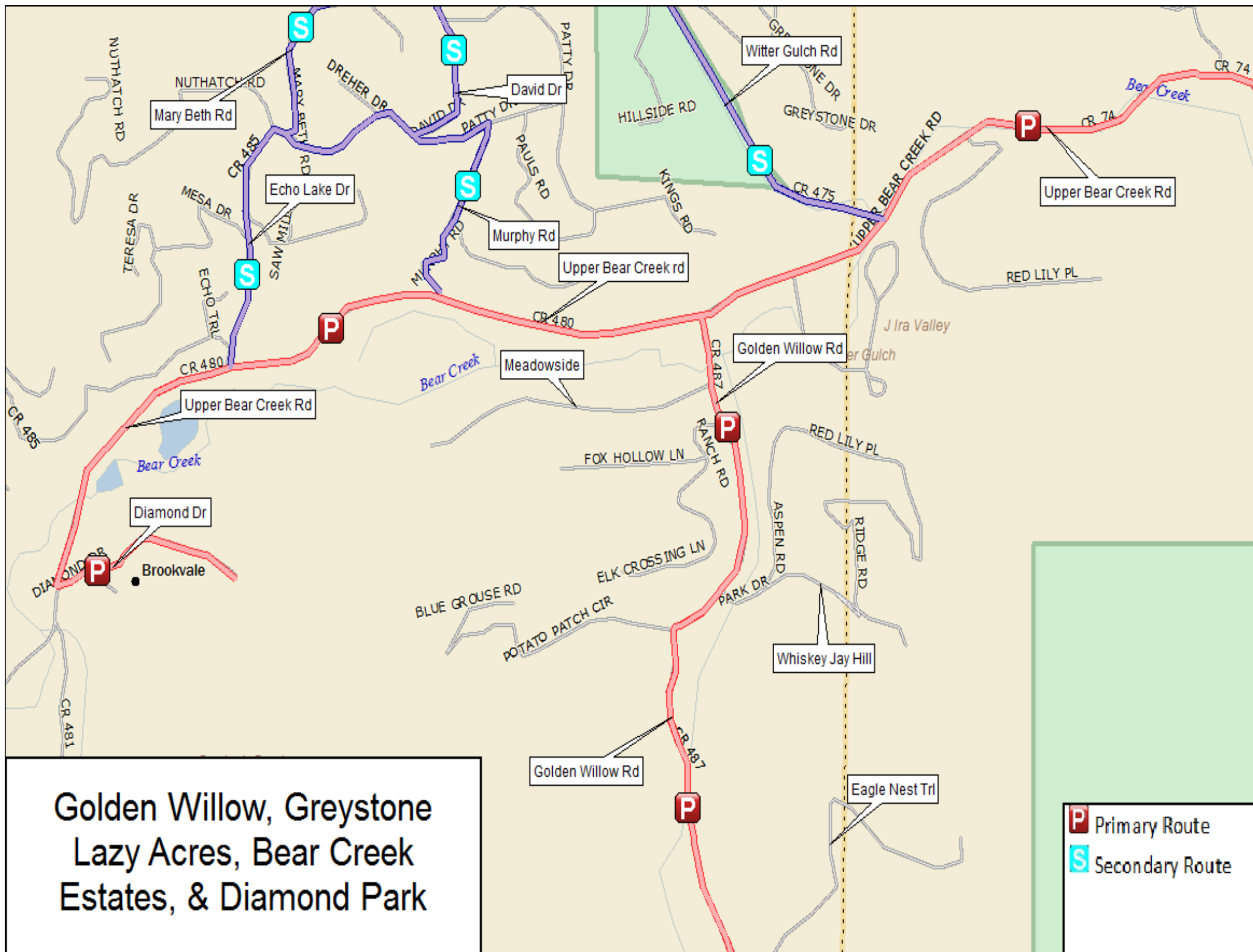
1. Follow the Fire Department or Sheriff's Office recommended evacuation routes. **DO NOT TAKE SHORT-CUTS.** They may be blocked. Be alert for bridges. Stay away from downed power lines. Disaster situations can be intense, stressful and confusing.
2. Gather water, food, clothing, medicines, emergency supplies, insurance and financial records.
3. Wear sturdy shoes and clothing that provides some protection, such as long pants, long-sleeved shirts, cap and jacket.
4. Secure your home. Close and lock doors and windows. Unplug appliances. If a hard freeze is likely during your absence, take actions needed to prevent damage to water pipes by freezing temperatures.
5. Turn off the main switch on electricity panel, if instructed to do so.
6. Let others know where you are going, leave a note or call.
7. Leave early enough to avoid being trapped.



## Your Go Kit:

- Battery powered radio / emergency radio
- Flashlights and extra batteries
- First aid kit
- Whistle for signaling
- Dust masks
- Wrenches and pliers for shutting down utilities
- Food with can opener
- Spare eyeglasses, shoes, coats, spare clothing
- Animal carriers ready at the front of the house
- Escape route plan and emergency numbers for friends, family, and neighbors
- Insurance, medical, prescriptions, and family information you may need.
- Spare keys.

All of these items should be kept by your door and ready to go at a moment's notice!



**Golden Willow, Greystone  
Lazy Acres, Bear Creek  
Estates, & Diamond Park**

**Evacuation Route:**

Please follow these Fire Department or Sheriff personnel recommended evacuation routes.

**Primary route:**

Dependent on your location  
Diamond Park

- Diamond Dr to Upper Bear Creek Rd.
- S Greystone Lazy Acres, Golden Willow, & Bear Creek Estates
- Golden Willow Rd to Upper Bear Creek Rd.

**Secondary route:**

**NOTE: TO BE USED ONLY UNDER THE DIRECTION OF FIRE OR SHERIFF AUTHORITY**

Dependent on your location

Access the closest secondary route

- Witter Gulch Rd north to Stagecoach Blvd
- Or
- Echo Lake Dr to Mary Beth Rd north to Circle K Ranch Rd
- Murphy Rd to David Dr to Circle K Ranch Rd

**Evacuation Levels:**

An evacuation notice will be sent via a “reverse 911” call; however you should be aware of what is happening in your area. Both law enforcement and firefighters may be tasked with door-to-door notification. You are encouraged to leave when any level of evacuation has been ordered. There are three levels of evacuation.

**Level 1 Evacuation** means *be ready*. Residents should be aware of the danger that exists in their area. You should make and be ready to leave, and then monitor local media outlets. Residents with special needs (such as the elderly or those with a susceptibility to breathing problems) are advised to evacuate. People with livestock or pets should consider moving them out of the area. Evacuations at this time are *voluntary*, but if you have concerns, evacuate now.

**Level 2 Evacuation** means *leave soon*. There is significant potential of danger in your area, and residents should relocate to a shelter or with family/friends outside the affected area. You need to leave *as soon as possible*.

**Level 3 Evacuation** means *leave immediately*. Danger in your area is current and imminent. There is no time to gather belongings. *Leave immediately*.